

## Features

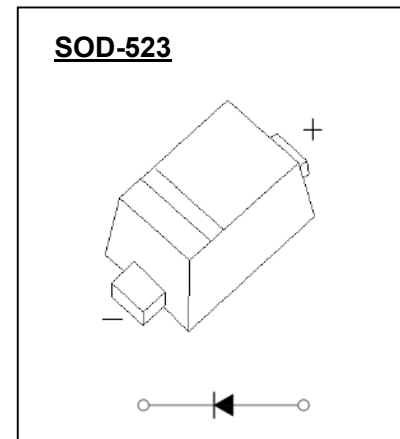
- ◆ Small surface mounting type
- ◆ Low reverse current and low forward voltage
- ◆ High reliability

## Marking



B=Device code

The marking bar indicates the cathode



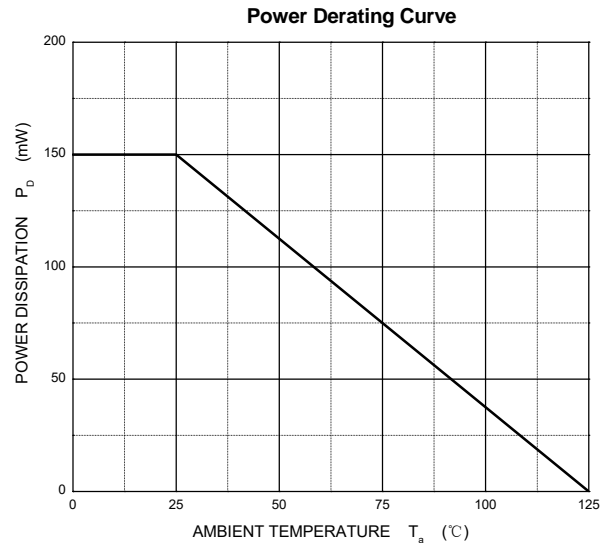
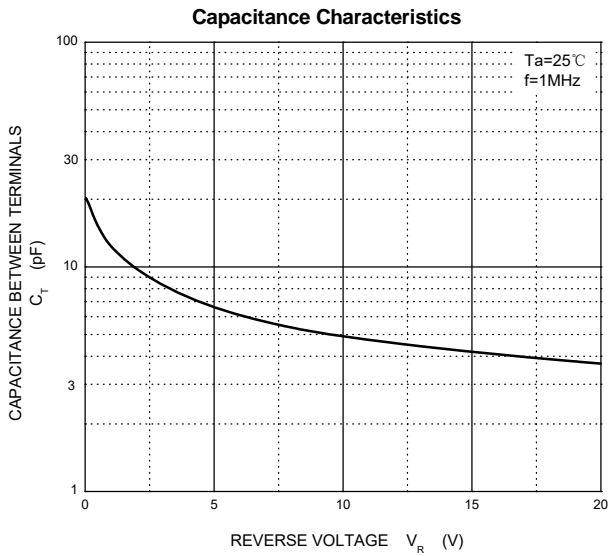
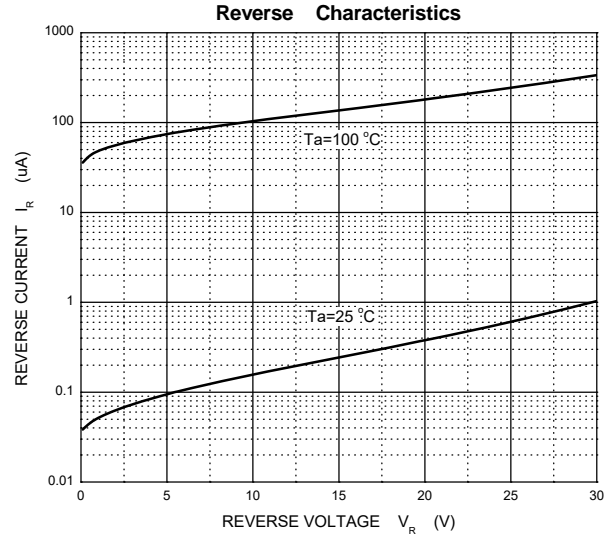
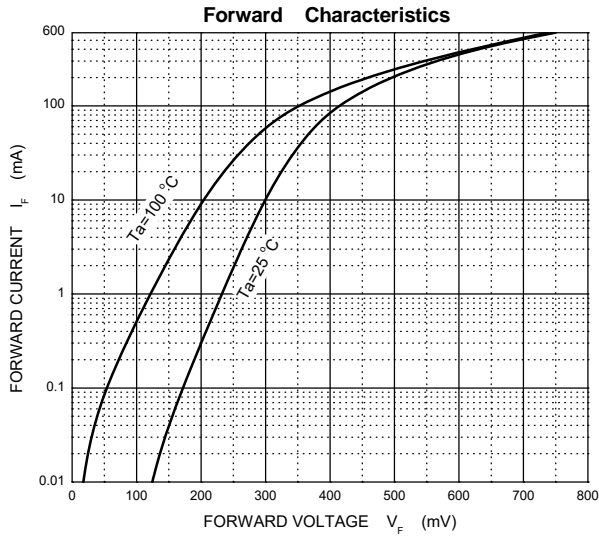
## Maximum Ratings & Thermal Characteristics (T<sub>A</sub>=25°C unless otherwise specified)

Parameter	Symbol	Limit	Unit
DC reverse voltage	V <sub>R</sub>	30	V
Mean rectifying current	I <sub>O</sub>	200	mA
Non-repetitive Peak forward surge current @ t=8.3ms	I <sub>FSM</sub>	1	A
Power dissipation	P <sub>D</sub>	150	mW
Thermal Resistance Junction to Ambient	R <sub>θJA</sub>	667	°C/W
Operating Junction Temperature Range	T <sub>J</sub>	-40 ~ +125	°C
Storage Temperature Range	T <sub>stg</sub>	-55 ~ +150	°C

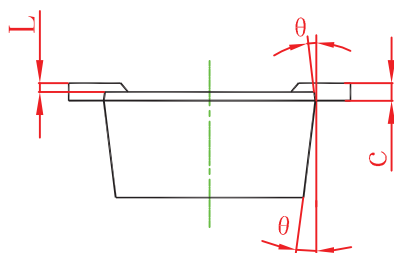
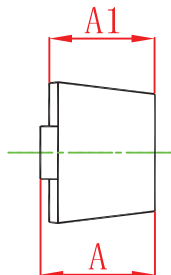
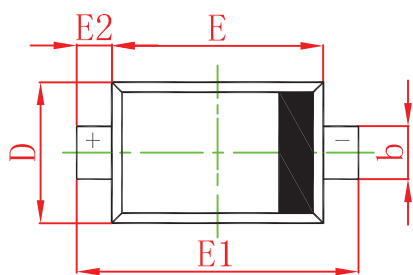
## Electrical Characteristics (T<sub>A</sub>=25°C unless otherwise specified)

Parameter	Symbol	Typ	Max	Unit	Conditions
Forward voltage	V <sub>F</sub>		0.6	V	I <sub>F</sub> =200mA
Reverse current	I <sub>R</sub>		1	μA	V <sub>R</sub> =10V

**Typical Performance Characteristics (TA=25°C unless otherwise Specified)**

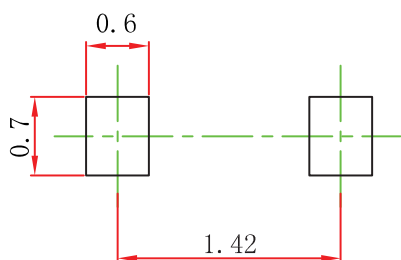


### SOD-523 Package Outline Drawing



Sym ol	Dimensions In Millimeters		Dimensions In Inches	
	Min	Max	Min	Max
A	0.510	0.770	0.020	0.031
A1	0.500	0.700	0.020	0.028
b	0.250	0.350	0.010	0.014
c	0.080	0.150	0.003	0.006
D	0.750	0.850	0.030	0.033
E	1.100	1.300	0.043	0.051
E1	1.500	1.700	0.059	0.067
E2	0.200 REF		0.008 REF	
L	0.010	0.070	0.001	0.003
θ	7° REF		7° REF	

### Suggested Land Pattern



- Note:
1. Controlling dimension: in millimeters.
  2. General tolerance:  $\pm 0.05\text{mm}$ .
  3. The pad layout is for reference purposes only.